



# THAMESIDE BRAY



## Thameside, Vicarage Walk Bray, Berkshire, SL6 2AE

*“A substantial family home set on the banks of the river Thames with private mooring”*

On the market for the first time since it's construction circa 25 years ago, a substantial riverside house nestled between the village Church and cricket pitch with approximately 75' of river frontage with mooring, on a particularly picturesque stretch of the Thames. The property is being offered onto the market with no onward chain.

Thameside is situated in the heart of the picturesque village of Bray, which boasts Michelin starred restaurants including the renowned Fat Duck, Waterside Inn and Hinds Head, plus Caldesi in Campagna and The Crown. Maidenhead offers a wide range of shopping and leisure amenities and there are further attractions in nearby historic Windsor.

Rail access to London (Paddington) is available from Maidenhead and Crossrail, the new high speed service, is due to begin running in 2022. The M4 is easily accessible, leading to Heathrow, Central London, the West Country and the M25.

Energy Rating: TBC

**Guide Price: £3,500,000 FREEHOLD**



## Accommodation summary

### *Ground Floor*

*Entrance Hall: Sitting room: Dining room: Kitchen/  
Breakfast room: Study: Bedroom 1 with En-suite  
Bathroom and Dressing room: Cloakroom: Utility  
Room.*

### *First Floor*

*Bedroom 2 with Balcony access: Family Bathroom:  
Sitting area/Potential Bedroom: Study area/Potential  
Bedroom: Bedroom 3 with Balcony*

### *Self contained Annexe:*

*Guest bedroom: kitchen: bathroom*

### *Outside*

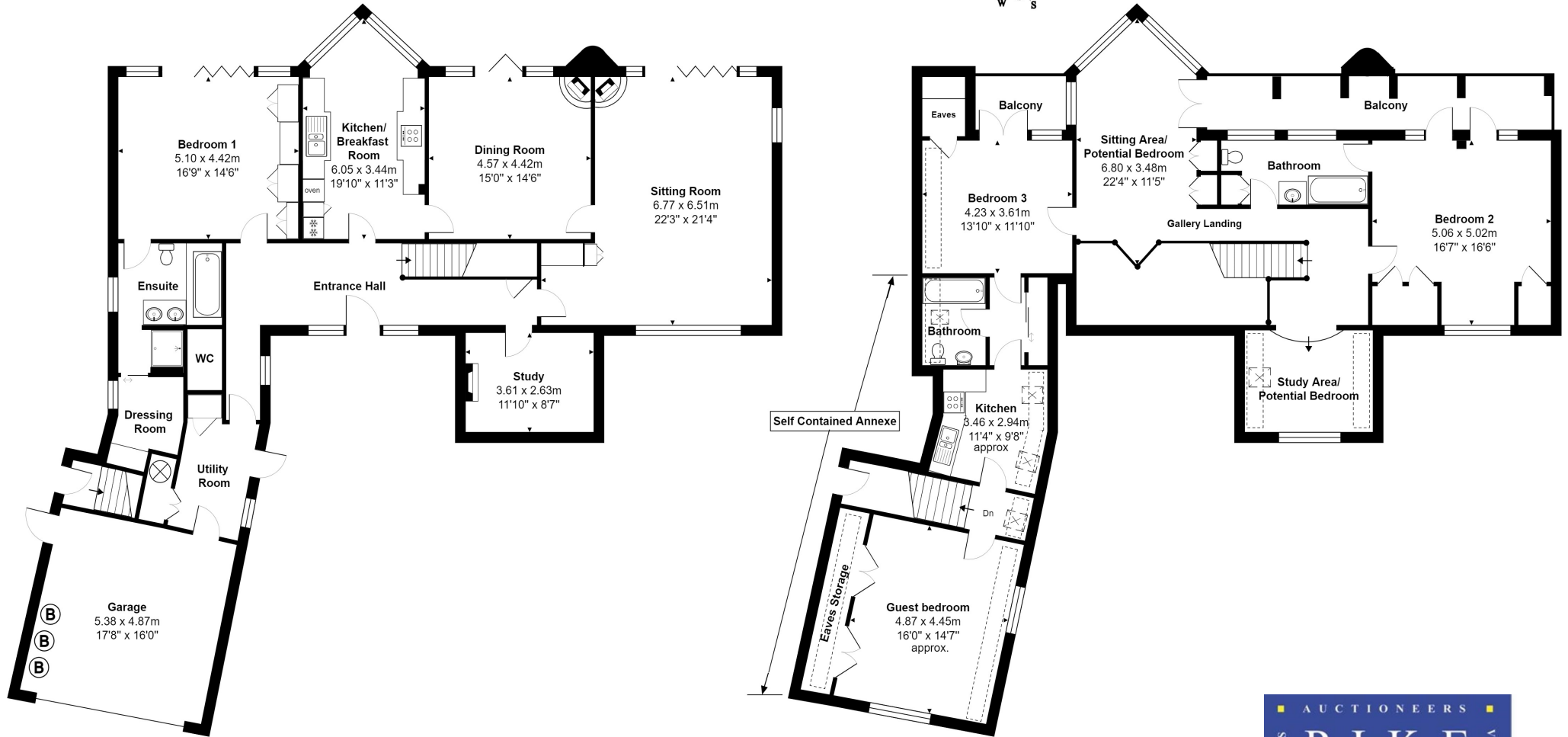
*Double Garage: Driveway: Landscaped Gardens:*

*75'ft River frontage with Mooring*



# Vicarage Walk, Bray, SL6 2AE

Approx: Total Area: 345.8 m<sup>2</sup> ... 3722 ft<sup>2</sup> (excluding balcony)

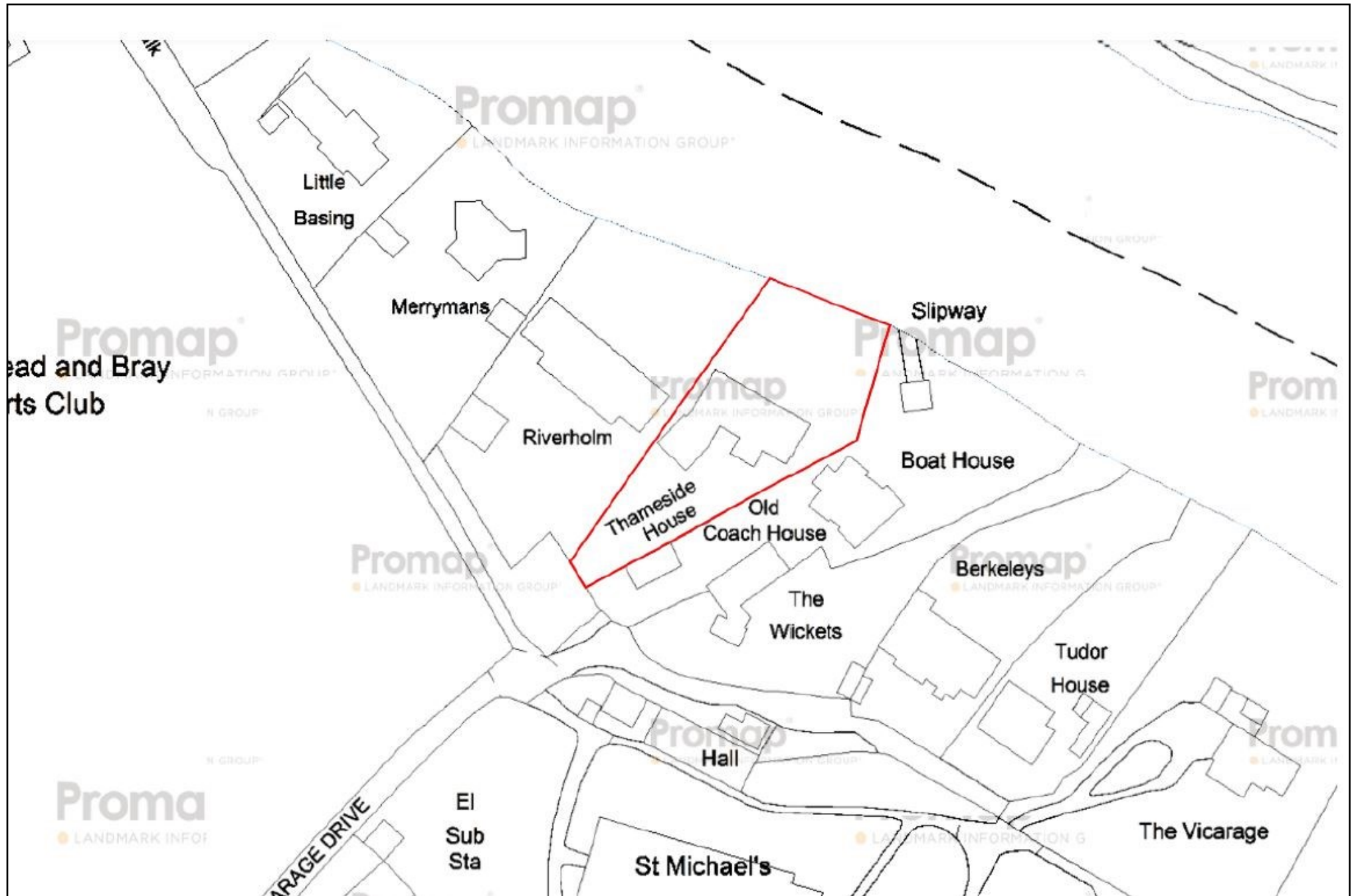


All measurements are approximate and for display purposes only.





## Site Plan













**Pike Smith & Kemp**  
22 Queen Street, Maidenhead  
Berkshire SL7 1HZ  
[maidenhead@pikesmithkemp.co.uk](mailto:maidenhead@pikesmithkemp.co.uk)  
01628 621177